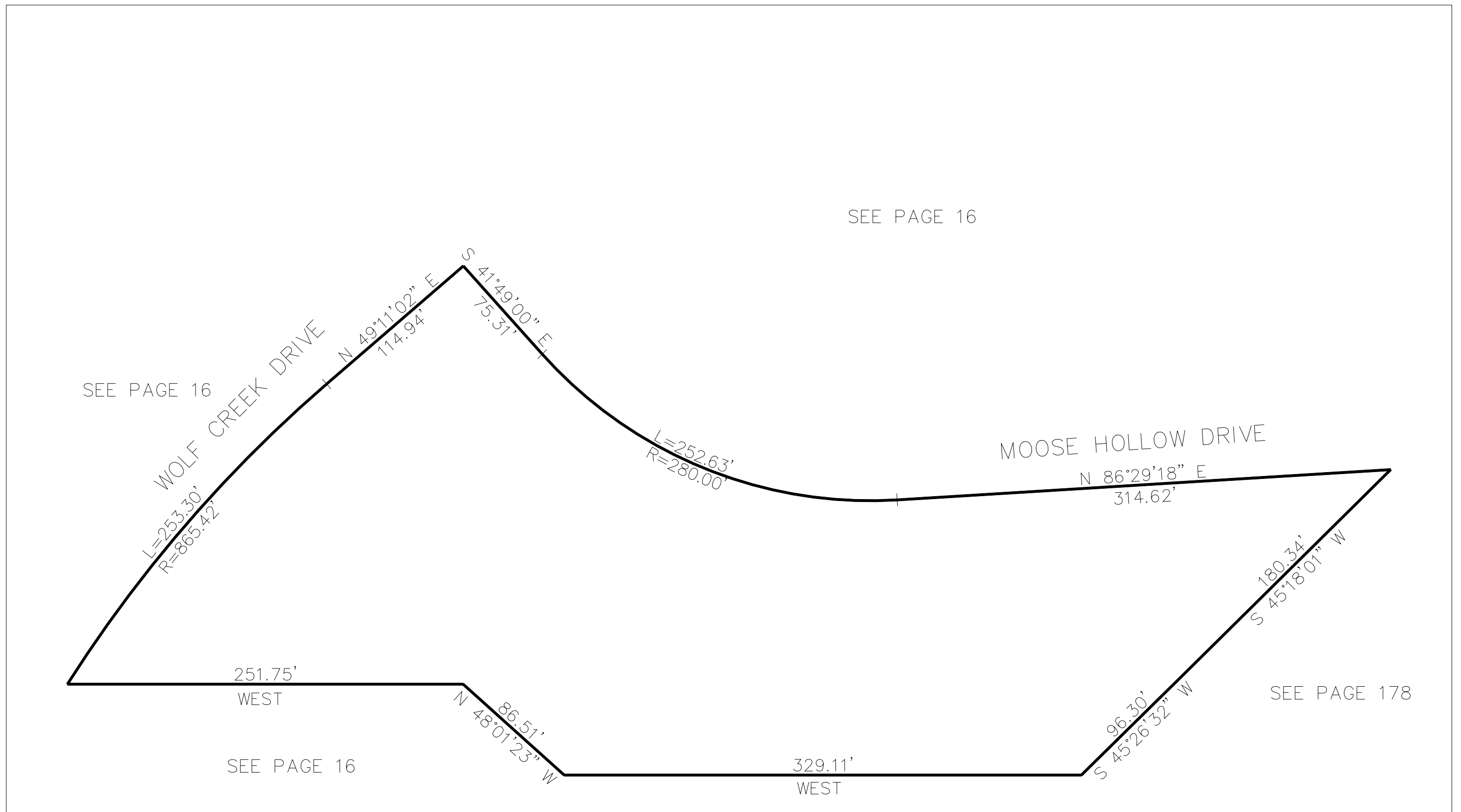


PART OF THE SW1/4, OF SECTION 22, T.7N., R.1E., S.L.B. & M.
POWDER CANYON CONDOMINIUM PROJECT PHASE 1

IN WEBER COUNTY

TAXING UNIT: 203

SCALE 1" = 60'



BLDG	UNIT	SERIAL	OWNERSHIP	BLDG	UNIT	SERIAL	OWNERSHIP
1	111	222790001	PC LUMINARY LLC	2	211	222790011	PC LUMINARY LLC
	112	222790002	PC LUMINARY LLC		212	222790012	PC LUMINARY LLC
	113	222790003	PC LUMINARY LLC		213	222790013	PC LUMINARY LLC
	114	222790004	PC LUMINARY LLC		214	222790014	PC LUMINARY LLC
	115	222790005	PC LUMINARY LLC		215	222790015	PC LUMINARY LLC
	121	222790006	PC LUMINARY LLC		221	222790016	PC LUMINARY LLC
	122	222790007	PC LUMINARY LLC		222	222790017	PC LUMINARY LLC
	123	222790008	PC LUMINARY LLC		223	222790018	PC LUMINARY LLC
	124	222790009	PC LUMINARY LLC		224	222790019	PC LUMINARY LLC
	125	222790010	PC LUMINARY LLC		225	222790020	PC LUMINARY LLC
C.A.	C.A.	222790021	COMMON AREA POWDER CANYON COND PH1				

10' UTILITY & DRAINAGE EASEMENTS EACH SIDE OF PROPERTY LINES AS INDICATED BY DASHED LINES EXCEPT AS OTHERWISE SHOWN.

FOR COMPLETE ENG DATA SEE ORIGINAL DEDICATION PLAT IN BOOK 68, PAGE 9 OF RECORDS.